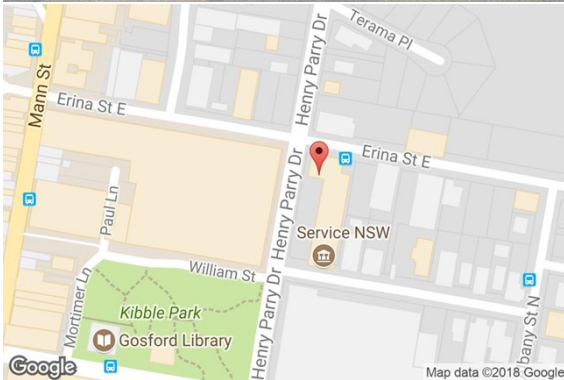
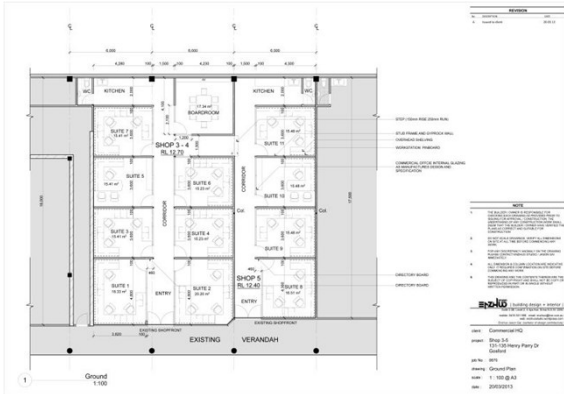


# For Lease 11m<sup>2</sup>

commercialhq

## Park Plaza 131 Henry Parry Drive GOSFORD



### SMALL OFFICE SUITES - 10.62m<sup>2</sup> to 21.47m<sup>2</sup>



Frontage



Boardroom



Kitchen



Air Conditioning



Parking



24 Hour Access



Gym

### The Tenancy:

Private, lockable small office suites available for lease with access to:

- Boardroom / Kitchenette / WC / Parking

Each Suite contains:

- Carpet / Ducted AC / Ceiling Grid and lighting / neutral coloured walls / shared parking

Suite 1: 20.93sqm \$12,500 p.a. + GST

Suite 2: 21.47sqm \$12,500 p.a. + GST

Suite 4: 18.70sqm \$10,500 p.a. + GST

Suite 5: 10.65sqm \$ 6,500 p.a. + GST

Suite 6: 10.62sqm \$ 6,500 p.a. + GST

Suite 7: 15.33sqm \$ 8,500 p.a. + GST

### Building Description:

An open air, plaza style shopping strip in the heart of Gosford and one of the few centres on the Coast with on site parking.

Home to professional businesses including: - Service NSW / Snap Fitness / Barnados / Cash Converters / Medical Centre / Music Cafe / businesshq / Snap Printing / Gosford Mart / Envee Hair and Beauty.

**Fit Out:** No  
**Lease Term:** Negotiable  
**Zoning:** B4 Mixed Use  
**Car Parking:** 4 shared spaces at shops front  
**Website:** <https://www.commercialhq.com.au/listing.aspx?SurgaWebListingId=G680891&viewType=V>

### Lease Details:

Suite No.	SQM	For Lease p.a.	Outgoings p.a.	Availability
Suite 1-7 in Shops 3&4	11	\$6,500.00		Now

\*All rents, outgoings and or sales prices are exclusive of GST.

### Contact:

**Nicole Gunasinghe**  
 0417792740  
 nicole@commercialhq.com.au

T 02 4365 4566

F 02 4365 4599

A Suite 3.01, Platinum Building, 4 Ilya Ave, Erina NSW 2250